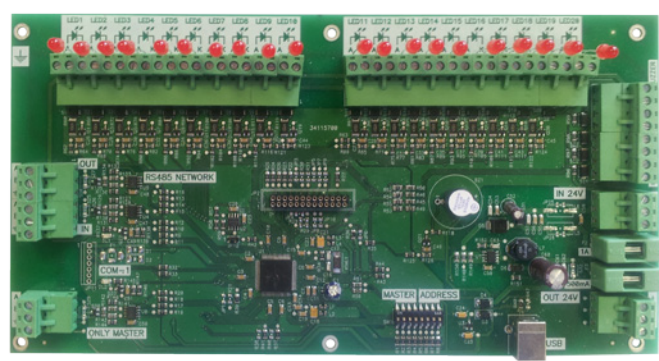









Network LED Driver

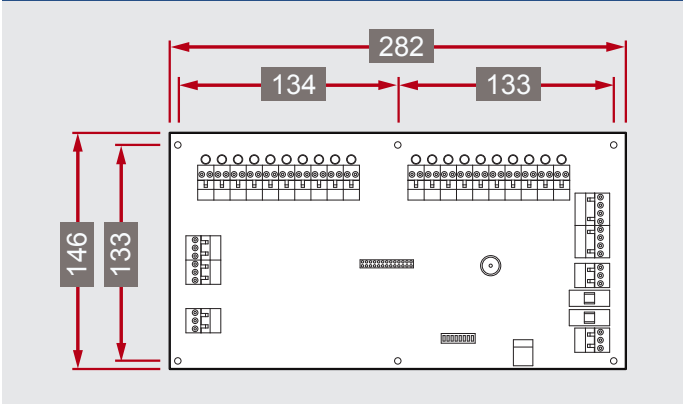
(NET-LD20 Part No. 37-525)



Features

-  20 LED outputs
-  Up to 32 modules per network loop
-  4 switch inputs
-  Internal buzzer
-  Can be configured as a master or a slave
-  On board facility for firmware upgrade when needed
-  Separate 24Vdc is required

Dimensions (mm)



Description

The NET-LD20 is a module to provide an LED mimic of the Quatro control panel zonal fire or fault LEDs, the module is placed on the network loop and is able to mimic the Quatro panel zonal LEDs of all panels on the network loop.

Each module can drive 20 LED outputs and up to 32 modules can be installed on the network loop.

The module has 4 switch inputs that can be used to silence internal buzzer, silence sounders, start sounders and reset function of all nodes on the network when configured as a controller.

The module is equipped with an internal buzzer which will sound when any fire LED is lit.

Applications

The main use for this module is to construct a remote zonal LED indication and/or a mimic graphic LED indicator. It can also be used to construct multiple LED mimic indicators as part of a network loop.

Each LED indication can also be used with sharing indications from a multiple panel Network.

Configuration

Each module can be configured as a master or a slave. A master will make use of the switch inputs and when configured as slave, then the switch inputs cannot be used.

For multiple of modules used, only one can be allowed to be configured as master.

No special software is required but the module has an on board facility for firmware upgrade when needed.

This module is not powered by the network loop, thus a separate 24Vdc is required.

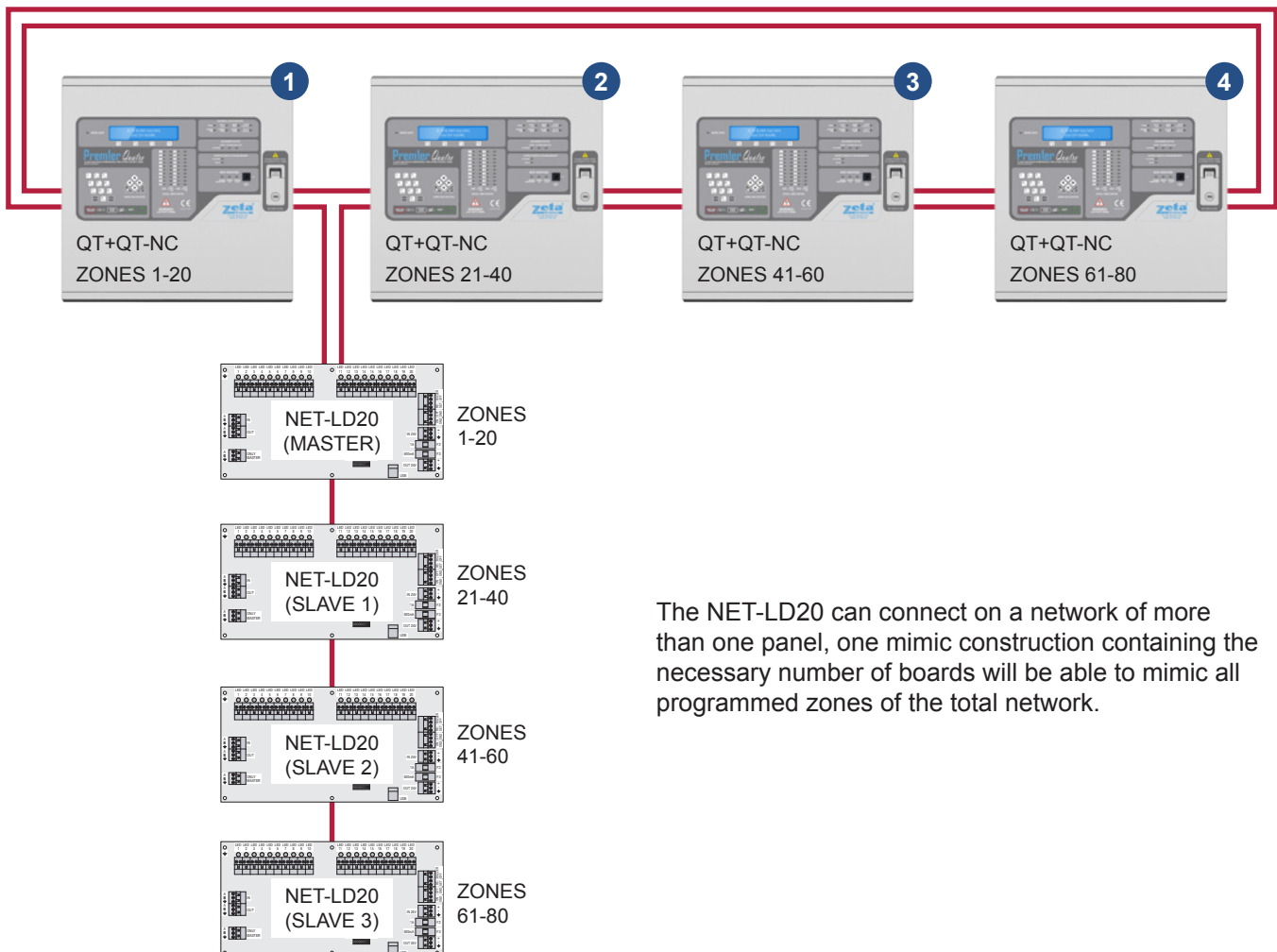


Mimic Graphic LED Indicator

A mimic LED panel can be constructed to suit any customer requirements, including sizes utilizing one or more NET-LD20 boards

The NET-LD20 board can also be configured to not only indicate fire but also fault. This option will give ten fire LEDs (red) and ten fault LEDs (yellow).

Inter Connections



The NET-LD20 can connect on a network of more than one panel, one mimic construction containing the necessary number of boards will be able to mimic all programmed zones of the total network.